

TEST REPORT IEC 62133-2 Secondary cells and batteries containing alkaline or other non-acid electrolytes – Safety requirements for portable sealed secondary cells, and for batteries made from them, for use in portable applications –Part 2: Lithium systems		
Report Number.....:	TSZ22010003-P01-Amd01	
Date of issue.....:	2022-03-03	
Total number of pages.....:	22	
Name of Testing Laboratory preparing the Report.....:	Shenzhen Tiansu Calibration and Testing Co., Ltd	
Applicant's name.....:	Flipper Devices Inc	
Address.....:	Suite B #551, 2803 Philadelphia Pike, Claymont, DE 19703	
Test specification:		
Standard.....:	IEC 62133-2:2017	
General disclaimer:		
The test results presented in this report relate only to the object tested. This report shall not be reproduced, except in full, without the written approval of the Issuing Laboratory.		
Test item description.....:	Li-ion Battery	
Trade Mark.....:	N/A	
Manufacturer.....:	GuangDong YungBang New Energy Co., Ltd. No.49, Shahu Qilin Ling Road, Tangxia Town, Dongguan City, Guangdong Province, china	
Model/Type reference.....:	753665	
Ratings.....:	2100mAh, 3.7V, 7.77Wh	
Responsible Testing Laboratory and testing location(s):		
<input checked="" type="checkbox"/>	Testing Laboratory:	Shenzhen Tiansu Calibration and Testing Co.,Ltd
Testing location/ address.....:		B/1,4, NO.2 Jinlong Road, Longgang District, Shenzhen, China
Tested by (name, function, signature).....:		Dove Fan/Project Handler
Approved by (name, function, signature)...:		Diamond Duan/Reviewer

List of Attachments (including a total number of pages in each attachment): <ul style="list-style-type: none"> - Page to 1 for 22 IEC 62133 TRF (main report) - Attachment 1 (1 Page): Circuit diagram - Attachment 2 (3 Pages): Product Photos 	
Summary of testing:	
Tests performed (name of test and test clause): Testing for cell: 753665 7.2.1 Continuous charging at constant voltage (cells) 7.3.1 External short-circuit (cell) 7.3.3 Free fall 7.3.4 Thermal abuse (cells) 7.3.5 Crush (cells) 7.3.7 Forced discharge (cells) 7.3.9 Forced internal short-circuit (cells)※ Testing for Battery: 753565 7.3.2 External short-circuit (battery) 7.3.3 Free fall 7.3.6 Over-charging of battery 7.3.8 Mechanical tests (batteries) 7.3.8.1 Vibration 7.3.8.2 Mechanical shock Tests are made with the number of in IEC 62133-2: 2017 Table 1. Remark: Parameter with asterisk "※" is not within the accreditation by CNAS.	Testing location: Shenzhen Tiansu Calibration and Testing Co.,Ltd B/1,4, NO.2 Jinlong Road, Longgang District, Shenzhen, China

Copy of marking plate:**The artwork below may be only a draft.**

-(black) Li-ion Battery
753665 1INP8/36/63
3.7V 1000mAh 3.7Wh
GuangDong YungBang New Energy Co., Ltd.
+(Red) YYMMDD Made in China
Caution:
Risk of Fire and Burns. Do Not Open, Crush, Heat Above 60°C
or Incinerate. Follow Manufacturer's Instructions.

Remark:

Above plate will be printed on the surface of the cell.

The date code "YYMMDD" represents that:

YY stands year of manufacture.

MM stands month of manufacture.

DD stands day of manufacture.

Test item particulars.....	: --
Classification of installation and use.....	: --
Supply Connection.....	: DC Connector
Recommend charging method declared by the manufacturer.....	: CC/CV
Discharge current (0,2 It A).....	: 420mA
Specified final voltage.....	: 3.0V
Upper limit charging voltage per cell.....	: 4.2V
Maximum charging current.....	: 1050mA
Charging temperature upper limit.....	: 45°C
Charging temperature lower limit.....	: 0°C
Polymer cell electrolyte type.....	: <input type="checkbox"/> gel polymer <input type="checkbox"/> solid polymer <input checked="" type="checkbox"/> N/A
Possible test case verdicts:	
- test case does not apply to the test object..... : N/A	
- test object does meet the requirement..... : P (Pass)	
- test object does not meet the requirement..... : F (Fail)	
Testing.....	
Date of receipt of test item.....	: 2022-01-07
Date (s) of performance of tests.....	: 2022-01-07 to 2022-01-14
General remarks:	
The original report number TSZ22010003-P01-R01 is invalid. Subject to this revision, the revised report number is TSZ22010003-P01-Amd01.	
"(See Enclosure #)" refers to additional information appended to the report. "(See appended table)" refers to a table appended to the report.	
Throughout this report a <input type="checkbox"/> comma / <input checked="" type="checkbox"/> point is used as the decimal separator.	
Name and address of factory (ies).....	
GuangDong YungBang New Energy Co., Ltd. No.49, Shahu Qilin Ling Road, Tangxia Town, Dongguan City, Guangdong Province, china	

General product information and other remarks:

The product covered by this report is Li-ion Battery (model: 753665) consists of single Li-ion Cell (model: 753565) which tested with appliance as per IEC 62133-2:2017 in the report.

The main features of the battery are shown as below (clause 7.1.1):

Model	Nominal capacity	Nominal voltage	Nominal Charge Current	Nominal Discharge Current	Maximum Charge Current	Maximum Discharge Current	Maximum Charge Voltage	Final Voltage
753665	2100mAh	3.7V	420mA	420mA	1050mA	2100mA	4.2V	3.0V

The main features of the cell in the battery pack are shown as below (clause 7.1.1):

Model	Nominal capacity	Nominal voltage	Nominal Charge Current	Nominal Discharge Current	Maximum Charge Current	Maximum Discharge Current	Maximum Charge Voltage	Cut-off Voltage
753565	2100mAh	3.7V	420mA	420mA	1050mA	2100mA	4.2V	3.0V

The main features of the cell are shown as below (clause 7.1.2):

Model	Upper limit charge voltage	Taper-off current	Lower charge temperature	Upper charge temperature
753565	4.2V	105mA	0°C	45°C

IEC 62133-2			
Clause	Requirement + Test	Result - Remark	Verdict
4	PARAMETER MEASUREMENT TOLERANCES		P
	Parameter measurement tolerances		P
5	GENERAL SAFETY CONSIDERATIONS		P
5.1	General		P
	Cells and batteries so designed and constructed that they are safe under conditions of both intended use and reasonably foreseeable misuse		P
5.2	Insulation and wiring		P
	The insulation resistance between the positive terminal and externally exposed metal surfaces of the battery (excluding electrical contact surfaces) is not less than 5 MΩ	No metal case exists.	N/A
	Insulation resistance (MΩ)..... :		—
	Internal wiring and insulation are sufficient to withstand maximum anticipated current, voltage and temperature requirements		P
	Orientation of wiring maintains adequate clearance and creepage distances between conductors		P
	Mechanical integrity of internal connections accommodates reasonably foreseeable misuse		P
5.3	Venting		P
	Battery cases and cells incorporate a pressure relief mechanism or are constructed so that they relieve excessive internal pressure at a value and rate that will preclude rupture, explosion and self-ignition	Venting mechanism exists on narrow side of the pouch cell.	P
	Encapsulation used to support cells within an outer casing does not cause the battery to overheat during normal operation nor inhibit pressure relief		P
5.4	Temperature, voltage and current management	See below	P
	Batteries are designed such that abnormal temperature rise conditions are prevented	Overcharge, over discharge, over current and short-circuit proof circuit used in this battery.	P
	Batteries are designed to be within temperature, voltage and current limits specified by the cell manufacturer	Cell specification and battery specification have been provided. The design of the battery refers to the parameters of the cell	P
	Batteries are provided with specifications and charging instructions for equipment manufacturers so that specified chargers are designed to maintain charging within the temperature, voltage and current limits specified	Battery specifications have been provided.	P

IEC 62133-2			
Clause	Requirement + Test	Result - Remark	Verdict
5.5	Terminal contacts		P
	The size and shape of the terminal contacts ensure that they can carry the maximum anticipated current	Complied. DC Connector	P
	External terminal contact surfaces are formed from conductive materials with good mechanical strength and corrosion resistance		P
	Terminal contacts are arranged to minimize the risk of short-circuit		P
5.6	Assembly of cells into batteries		P
5.6.1	General	1S1P	P
	Each battery have an independent control and protection for current, voltage, temperature and any other parameter required for safety and to maintain the cells within their operating region		P
	This protection may be provided external to the battery such as within the charger or the end devices		N/A
	If protection is external to the battery, the manufacturer of the battery provide this safety relevant information to the external device manufacturer for implementation		N/A
	If there is more than one battery housed in a single battery case, each battery have protective circuitry that can maintain the cells within their operating regions		N/A
	Manufacturers of cells specify current, voltage and temperature limits so that the battery manufacturer/designer may ensure proper design and assembly	Current, voltage and temperature limits specified by cell manufacturer.	P
	Batteries that are designed for the selective discharge of a portion of their series connected cells incorporate circuitry to prevent operation of cells outside the limits specified by the cell manufacturer	Battery without selective discharge function.	N/A
	Protective circuit components added as appropriate and consideration given to the end-device application		N/A
	The manufacturer of the battery provide a safety analysis of the battery safety circuitry with a test report including a fault analysis of the protection circuit under both charging and discharging conditions confirming the compliance		N/A
5.6.2	Design recommendation		P

IEC 62133-2			
Clause	Requirement + Test	Result - Remark	Verdict
	For the battery consisting of a single cell or a single cellblock, it is recommended that the charging voltage of the cell does not exceed the upper limit of the charging voltage specified in Table 2	Cell upper limit of the charging voltage: 4.2V	P
	For the battery consisting of series-connected plural single cells or series-connected plural cellblocks, it is recommended that the voltages of any one of the single cells or single cellblocks does not exceed the upper limit of the charging voltage, specified in Table 2, by monitoring the voltage of every single cell or the single cellblocks		N/A
	For the battery consisting of series-connected plural single cells or series-connected plural cellblocks, it is recommended that charging is stopped when the upper limit of the charging voltage is exceeded for any one of the single cells or single cellblocks by measuring the voltage of every single cell or the single cellblocks		N/A
	For batteries consisting of series-connected cells or cell blocks, nominal charge voltage not be counted as an overcharge protection		P
	For batteries consisting of series-connected cells or cell blocks, cells have closely matched capacities, be of the same design, be of the same chemistry and be from the same manufacturer		P
	It is recommended that the cells and cell blocks not discharged beyond the cell manufacturer's specified final voltage		P
	For batteries consisting of series-connected cells or cell blocks, cell balancing circuitry incorporated into the battery management system		N/A
5.6.3	Mechanical protection for cells and components of batteries	This shall be considered in end product.	N/A
	Mechanical protection for cells, cell connections and control circuits within the battery provided to prevent damage as a result of intended use and reasonably foreseeable misuse		N/A
	The mechanical protection can be provided by the battery case or it can be provided by the end product enclosure for those batteries intended for building into an end product		N/A
	The battery case and compartments housing cells designed to accommodate cell dimensional tolerances during charging and discharging as recommended by the cell manufacturer		N/A

IEC 62133-2			
Clause	Requirement + Test	Result - Remark	Verdict
	For batteries intended for building into a portable end product, testing with the battery installed within the end product considered when conducting mechanical tests	This shall be considered in end product.	N/A
5.7	Quality plan		N/A
	The manufacturer prepares and implements a quality plan that defines procedures for the inspection of materials, components, cells and batteries and which covers the whole process of producing each type of cell or battery	No relevant documents provided	N/A
5.8	Battery safety components		N/A
	According annex F		N/A

6	TYPE TEST AND SAMPLE SIZE		P
	Tests are made with the number of cells or batteries specified in Table 1 using cells or batteries that are not more than six months old	Tests are performed according to specified in Table 1 of this standard. The samples are not more than six months old.	P
	Coin cells with resistance $\leq 3 \Omega$ (measured according annex D) are tested according table 1	Not coin cell.	N/A
	Unless otherwise specified, tests are carried out in an ambient temperature of $20 \text{ }^{\circ}\text{C} \pm 5 \text{ }^{\circ}\text{C}$		P
	The safety analysis of 5.6.1 identify those components of the protection circuit that are critical for short-circuit, overcharge and overdischarge protection		N/A
	When conducting the short-circuit test, consideration given to the simulation of any single fault condition that is likely to occur in the protecting circuit that would affect the short-circuit test		P

7	SPECIFIC REQUIREMENTS AND TESTS		P
7.1	Charging procedure for test purposes		P
7.1.1	First procedure		P
	This charging procedure applies to subclauses other than those specified in 7.1.2		P
	Unless otherwise stated in this document, the charging procedure for test purposes is carried out in an ambient temperature of $20 \text{ }^{\circ}\text{C} \pm 5 \text{ }^{\circ}\text{C}$, using the method declared by the manufacturer		P
	Prior to charging, the battery have been discharged at $20 \text{ }^{\circ}\text{C} \pm 5 \text{ }^{\circ}\text{C}$ at a constant current of 0,2 It A down to a specified final voltage		P

IEC 62133-2			
Clause	Requirement + Test	Result - Remark	Verdict
7.1.2	Second procedure		P
	This charging procedure applies only to 7.3.1, 7.3.4, 7.3.5, and 7.3.9		P
	After stabilization for 1 h and 4 h, respectively, at ambient temperature of highest test temperature and lowest test temperature, as specified in Table 2, cells are charged by using the upper limit charging voltage and maximum charging current, until the charging current is reduced to 0,05 It A, using a constant voltage charging method	Highest test temperature: 45°C Lowest test temperature: 0°C	P
7.2	Intended use		P
7.2.1	Continuous charging at constant voltage (cells)	Tested complied.	P
	Fully charged cells are subjected for 7 days to a charge using the charging method for current and standard voltage specified by the cell manufacturer		P
	Results: No fire. No explosion. No leakage..... :	(See appended table 7.2.1)	P
7.2.2	Case stress at high ambient temperature (battery)	Tested as client's requirement.	P
	Oven temperature (°C)..... :	70	—
	Results: No physical distortion of the battery case resulting in exposure of internal protective components and cells		P
7.3	Reasonably foreseeable misuse		P
7.3.1	External short-circuit (cell)	Tested complied.	P
	The cells were tested until one of the following occurred:		P
	- 24 hours elapsed; or		N/A
	- The case temperature declined by 20 % of the maximum temperature rise		P
	Results: No fire. No explosion..... :	(See appended table 7.3.1)	P
7.3.2	External short-circuit (battery)	Test complied.	P
	The batteries were tested until one of the following occurred:		P
	- 24 hours elapsed; or		N/A
	- The case temperature declined by 20 % of the maximum temperature rise		P
	In case of rapid decline in short circuit current, the battery pack remained on test for an additional one hour after the current reached a low end steady state condition		P

IEC 62133-2			
Clause	Requirement + Test	Result - Remark	Verdict
	A single fault in the discharge protection circuit conducted on one to four (depending upon the protection circuit) of the five samples before conducting the short-circuit test		P
	A single fault applies to protective component parts such as MOSFET, fuse, thermostat or positive temperature coefficient (PTC) thermistor		P
	Results: No fire. No explosion..... :	(See appended table 7.3.2)	P
7.3.3	Free fall	Tested complied.	P
	Results: No fire. No explosion		P
7.3.4	Thermal abuse (cells)	Tested complied.	P
	Oven temperature (°C)..... :	130	—
	Results: No fire. No explosion		P
7.3.5	Crush (cells)	Tested complied.	P
	The crushing force was released upon:		P
	- The maximum force of 13 kN ± 0,78 kN has been applied; or		P
	- An abrupt voltage drop of one-third of the original voltage has been obtained		N/A
	Results: No fire. No explosion..... :	(See appended table 7.3.5)	P
7.3.6	Over-charging of battery	Tested complied.	P
	The supply voltage which is:		P
	- 1,4 times the upper limit charging voltage presented in Table A.1 (but not to exceed 6,0 V) for single cell/cell block batteries or	5.88V used for test.	P
	- 1,2 times the upper limit charging voltage presented in Table A.1 per cell for series connected multi-cell batteries, and		N/A
	- Sufficient to maintain a current of 2,0 It A throughout the duration of the test or until the supply voltage is reached		P
	Test was continued until the temperature of the outer casing:		P
	- Reached steady state conditions (less than 10 °C change in 30-minute period); or		P
	- Returned to ambient		N/A
	Results: No fire. No explosion..... :	(See appended table 7.3.6)	P
7.3.7	Forced discharge (cells)	Tested complied.	P

IEC 62133-2			
Clause	Requirement + Test	Result - Remark	Verdict
	If the discharge voltage reaches the negative value of upper limit charging voltage within the testing duration, the voltage is maintained at the negative value of the upper limit charging voltage by reducing the current for the remainder of the testing duration		N/A
	If the discharge voltage does not reach the negative value of upper limit charging voltage within the testing duration, the test is terminated at the end of the testing duration		P
	Results: No fire. No explosion..... :	(See appended table 7.3.7)	P
7.3.8	Mechanical tests (batteries)	Tested complied.	P
7.3.8.1	Vibration		P
	Results: No fire, no explosion, no rupture, no leakage or venting..... :		P
7.3.8.2	Mechanical shock	Tested complied.	P
	Results: No leakage, no venting, no rupture, no explosion and no fire..... :		P
7.3.9	Design evaluation – Forced internal short-circuit (cells)	Tested complied.	P
	The cells complied with national requirement for..... :	France, Japan, Republic of Korea, Switzerland	—
	The pressing was stopped upon:		P
	- A voltage drop of 50 mV has been detected; or		N/A
	- The pressing force of 800 N (cylindrical cells) or 400 N (prismatic cells) has been reached	400N for prismatic cells.	P
	Results: No fire..... :	(See appended table 7.3.9)	P

8	INFORMATION FOR SAFETY		P
8.1	General		P
	Manufacturers of secondary cells ensure that information is provided about current, voltage and temperature limits of their products	Information for safety mentioned in manufacturer's specifications	P
	Manufacturers of batteries ensure that equipment manufacturers and, in the case of direct sales, end-users are provided with information to minimize and mitigate hazards	Information for safety mentioned in manufacturer's specifications	P
	Systems analyses performed by device manufacturers to ensure that a particular battery design prevents hazards from occurring during use of a product		N/A

IEC 62133-2			
Clause	Requirement + Test	Result - Remark	Verdict
	As appropriate, any information relating to hazard avoidance resulting from a system analysis provided to the end user		N/A
	Do not allow children to replace batteries without adult supervision		N/A
8.2	Small cell and battery safety information	Not Small batteries.	N/A
	The following warning language is to be provided with the information packaged with the small cells and batteries or equipment using them:		N/A
	- Keep small cells and batteries which are considered swallowable out of the reach of children		N/A
	- Swallowing may lead to burns, perforation of soft tissue, and death. Severe burns can occur within 2 h of ingestion		N/A
	- In case of ingestion of a cell or battery, seek medical assistance promptly		N/A

9	MARKING		P
9.1	Cell marking		P
	Cells marked as specified in IEC 61960, except coin cells		N/A
	Coin cells whose external surface area is too small to accommodate the markings on the cells show the designation and polarity		N/A
	By agreement between the cell manufacturer and the battery and/or end product manufacturer, component cells used in the manufacture of a battery need not be marked		P
9.2	Battery marking		P
	Batteries marked as specified in IEC 61960, except for coin batteries	IEC Designation: 1INP8/36/63, see marking plate on page 3.	P
	Coin batteries whose external surface area is too small to accommodate the markings on the batteries show the designation and polarity. Batteries also marked with an appropriate caution statement	Not coin battery.	N/A
	Terminals have clear polarity marking on the external surface of the battery		N/A
	Batteries with keyed external connectors designed for connection to specific end products need not be marked with polarity markings if the design of the external connector prevents reverse polarity connections		P

IEC 62133-2			
Clause	Requirement + Test	Result - Remark	Verdict
9.3	Caution for ingestion of small cells and batteries		N/A
	Coin cells and batteries identified as small batteries according to 8.2 include a caution statement regarding the hazards of ingestion in accordance with 8.2	Not coin cells and batteries.	N/A
	When small cells and batteries are intended for direct sale in consumer-replaceable applications, caution for ingestion given on the immediate package		N/A
9.4	Other information		P
	Storage and disposal instructions		P
	Recommended charging instructions		P

10	PACKAGING AND TRANSPORT		P
	Packaging for coin cells not small enough to fit within the limits of the ingestion gauge of Figure 3	Not coin cells	N/A
	The materials and packaging design are chosen so as to prevent the development of unintentional electrical conduction, corrosion of the terminals and ingress of environmental contaminants		P

ANNEX A	CHARGING AND DISCHARGING RANGE OF SECONDARY LITHIUM ION CELLS FOR SAFE USE		P
A.1	General		P
A.2	Safety of lithium ion secondary battery		P
A.3	Consideration on charging voltage		P
A.3.1	General		P
A.3.2	Upper limit charging voltage	Upper limit charging voltage of cell is 4.2V.	P
A.3.2.1	General		P
A.3.2.2	Explanation of safety viewpoint		N/A
A.3.2.3	Safety requirements, when different upper limit charging voltage is applied		N/A
A.4	Consideration of temperature and charging current		P
A.4.1	General		P
A.4.2	Recommended temperature range	Charging temperature range declared by client is 0-45°C	N/A
A.4.2.1	General		N/A

IEC 62133-2			
Clause	Requirement + Test	Result - Remark	Verdict
A.4.2.2	Safety consideration when a different recommended temperature range is applied		N/A
A.4.3	High temperature range		N/A
A.4.3.1	General		N/A
A.4.3.2	Explanation of safety viewpoint		N/A
A.4.3.3	Safety considerations when specifying charging conditions in the high temperature range		N/A
A.4.3.4	Safety considerations when specifying a new upper limit in the high temperature range		N/A
A.4.4	Low temperature range		N/A
A.4.4.1	General		N/A
A.4.4.2	Explanation of safety viewpoint		N/A
A.4.4.3	Safety considerations, when specifying charging conditions in the low temperature range		N/A
A.4.4.4	Safety considerations when specifying a new lower limit in the low temperature range		N/A
A.4.5	Scope of the application of charging current		P
A.4.6	Consideration of discharge		P
A.4.6.1	General		P
A.4.6.2	Final discharge voltage and explanation of safety viewpoint	Cell specified final voltage is 3.0V	P
A.4.6.3	Discharge current and temperature range		P
A.4.6.4	Scope of application of the discharging current		P
A.5	Sample preparation		P
A.5.1	General		P
A.5.2	Insertion procedure for nickel particle to generate internal short		P
A.5.3	Disassembly of charged cell		P
A.5.4	Shape of nickel particle		P
A.5.5	Insertion of nickel particle in cylindrical cell		N/A
A.5.5.1	Insertion of nickel particle in winding core		N/A
A.5.5.2	Marking the position of the nickel particle on both ends of the winding core of the separator		N/A
A.5.6	Insertion of nickel particle in prismatic cell		P
A.6	Experimental procedure of the forced internal short-circuit test		P
A.6.1	Material and tools for preparation of nickel particle		P

IEC 62133-2			
Clause	Requirement + Test	Result - Remark	Verdict
A.6.2	Example of a nickel particle preparation procedure		P
A.6.3	Positioning (or placement) of a nickel particle		P
A.6.4	Damaged separator precaution		P
A.6.5	Caution for rewinding separator and electrode		P
A.6.6	Insulation film for preventing short-circuit		P
A.6.7	Caution when disassembling a cell		P
A.6.8	Protective equipment for safety		P
A.6.9	Caution in the case of fire during disassembling		P
A.6.10	Caution for the disassembling process and pressing the electrode core		P
A.6.11	Recommended specifications for the pressing device		P

ANNEX B	RECOMMENDATIONS TO EQUIPMENT MANUFACTURERS AND BATTERY ASSEMBLERS	P
----------------	--------------------------------------------------------------------------	---

ANNEX C	RECOMMENDATIONS TO THE END-USERS	P
----------------	-----------------------------------------	---

ANNEX D	MEASUREMENT OF THE INTERNAL AC RESISTANCE FOR COIN CELLS	N/A
D.1	General	N/A
D.2	Method	N/A
	A sample size of three coin cells is required for this measurement.....:	(See appended table D.2) N/A
	Coin cells with an internal resistance of less than or equal to 3 Ω are subjected to the testing according to Clause 6 and Table 1	N/A
	Coin cells with an internal resistance greater than 3 Ω require no further testing	N/A

ANNEX E	PACKAGING AND TRANSPORT	N/A
----------------	--------------------------------	-----

ANNEX F	COMPONENT STANDARDS REFERENCES	N/A
----------------	---------------------------------------	-----

IEC 62133-2			
Clause	Requirement + Test	Result - Remark	Verdict

TABLE: Critical components information					N/A
Object / part No.	Manufacturer / trademark	Type / model	Technical data	Standard	Mark(s) of conformity ¹⁾
Cell	GuangDong YungBang New Energy Co., Ltd.	753565	2100mAh, 3.7V, 7.77Wh	IEC 62133-2: 2017	Tested with appliance
-Electrolyte	--	--	--	--	--
-Separator	--	--	--	--	--
-Negative electrode	--	--	--	--	--
-Positive electrode	--	--	--	--	--
PCB	--	--	--	--	--
IC	--	--	--	--	--
MOSFET	--	--	--	--	--
Supplementary information:					
¹⁾ Provided evidence ensures the agreed level of compliance. See OD-CB2039. Because the customer's business secrets cannot provide the above information					

IEC 62133-2						
Clause	Requirement + Test			Result - Remark		Verdict
7.3.2	TABLE: External short-circuit (battery)					P
Sample no.	Ambient T (°C)	OCV before test (Vdc)	Resistance of circuit (mΩ)	Maximum case temperature rise ΔT (K)	Component single fault condition	Results
B04#	22.7	4.186	76	84.8	SC MOSFET(U2)	P
B05#	22.7	4.184	80	83.1	SC MOSFET(U2)	P
B06#	22.7	4.185	76	85.7	SC MOSFET(U3)	P
B07#	22.7	4.185	72	87.5	SC MOSFET(U3)	P
B08#	22.7	4.186	70	0.4	Normal	P
Supplementary information: - No fire or explosion - SC means short-circuit						

7.3.5	TABLE: Crush (cells)				P
Sample no.	OCV before test (Vdc)	OCV at removal of crushing force (Vdc)	Maximum force applied to the cell during crush (kN)	Results	
Samples charged at charging temperature upper limit ¹⁾					
C29#	4.164	4.162	13.12	P	
C30#	4.165	4.164	13.08	P	
C31#	4.165	4.163	13.12	P	
C32#	4.165	4.162	13.07	P	
C33#	4.166	4.164	13.14	P	
Samples charged at charging temperature lower limit ²⁾					
C34#	4.095	4.092	13.05	P	
C35#	4.094	4.093	13.07	P	
C36#	4.094	4.092	13.11	P	
C37#	4.095	4.093	13.10	P	
C38#	4.093	4.091	13.08	P	
Supplementary information: - No fire or explosion 1) Cells charged at 45°C 2) Cells charged at 0°C - The ambient temperature is 22.9°C					

IEC 62133-2			
Clause	Requirement + Test	Result - Remark	Verdict

7.3.6	TABLE: Over-charging of battery			P
Constant charging current (A).....:		4.2		—
Supply voltage (Vdc).....:		5.88		—
Sample no.	OCV before charging (Vdc)	Total charging time (minute)	Maximum outer case temperature (°C)	Results
B12#	3.358	100	34.9	P
B13#	3.359	100	35.7	P
B14#	3.361	100	32.5	P
B15#	3.355	100	33.4	P
B16#	3.357	100	34.4	P
Supplementary information: - No fire or explosion - The ambient temperature is 22.7°C				

7.3.7	TABLE: Forced discharge (cells)			P
Sample no.	OCV before application of reverse charge (Vdc)	Measured reverse charge I_t (A)	Lower limit discharge voltage (Vdc)	Results
C39#	3.336	2.1	-1.117	P
C40#	3.337	2.1	-1.109	P
C41#	3.338	2.1	-1.115	P
C42#	3.336	2.1	-1.121	P
C43#	3.334	2.1	-1.114	P
Supplementary information: - No fire or explosion - The ambient temperature is 22.9°C				

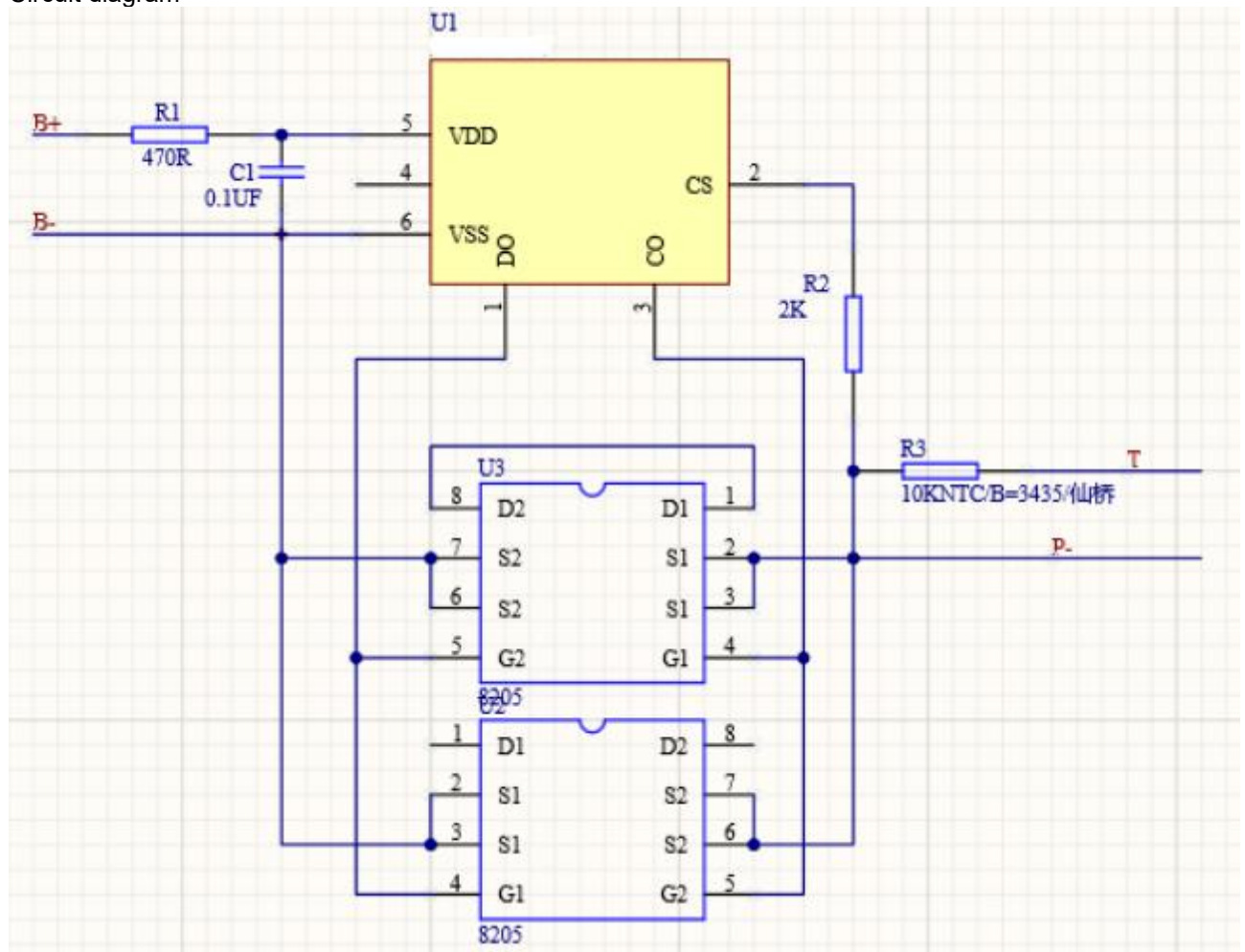
7.3.8.1	TABLE: Vibration				P
Sample no.	OCV before test (Vdc)	OCV after test (Vdc)	Mass before test (g)	Mass after test (g)	Results
B17#	4.186	4.184	35.248	35.247	P
B18#	4.184	4.183	35.253	35.252	P
B19#	4.185	4.184	35.259	35.258	P
Supplementary information: - No fire or explosion - No rupture - No leakage - No venting - The ambient temperature is 22.7°C					

7.3.8.2	TABLE: Mechanical shock					P
Sample no.	OCV before test (Vdc)	OCV after test (Vdc)	Mass before test (g)	Mass after test (g)	Results	
B20#	4.185	4.185	35.249	35.248	P	
B21#	4.184	4.183	35.252	35.251	P	
B22#	4.185	4.184	35.247	35.246	P	
Supplementary information: - No fire or explosion - No rupture - No leakage - No venting - The ambient temperature is 23.1°C						

7.3.9※	TABLE: Forced internal short circuit (cells)					P
Sample no.	Chamber ambient T (°C)	OCV before test (Vdc)	Particle location ¹⁾	Maximum applied pressure (N)	Results	
Samples charged at charging temperature upper limit ²⁾						
C44#	45	4.165	1*	400	P	
C45#	45	4.163	1*	400	P	
C46#	45	4.165	1	400	P	
C47#	45	4.164	1	400	P	
C48#	45	4.167	1	400	P	
Samples charged at charging temperature lower limit ³⁾						
C49#	0	4.095	1*	400	P	
C50#	0	4.096	1*	400	P	
C51#	0	4.094	1	400	P	
C52#	0	4.096	1	400	P	
C53#	0	4.097	1	400	P	
Supplementary information: 1) Identify one of the following: 1: Nickel particle inserted between positive and negative (active material) coated area. 2: Nickel particle inserted between positive aluminium foil and negative active material coated area. 2) Cells charged at 45°C 3) Cells charged at 0°C						

IEC 62133-2				
Clause	Requirement + Test		Result - Remark	Verdict
D.2	TABLE: Internal AC resistance for coin cells			N/A
Sample no.	Ambient T (°C)	Store time (h)	Resistance Rac (Ω)	Results ¹⁾
Supplementary information:				
¹⁾ Coin cells with internal resistance less than or equal to 3 Ω , see test result on corresponding tables				

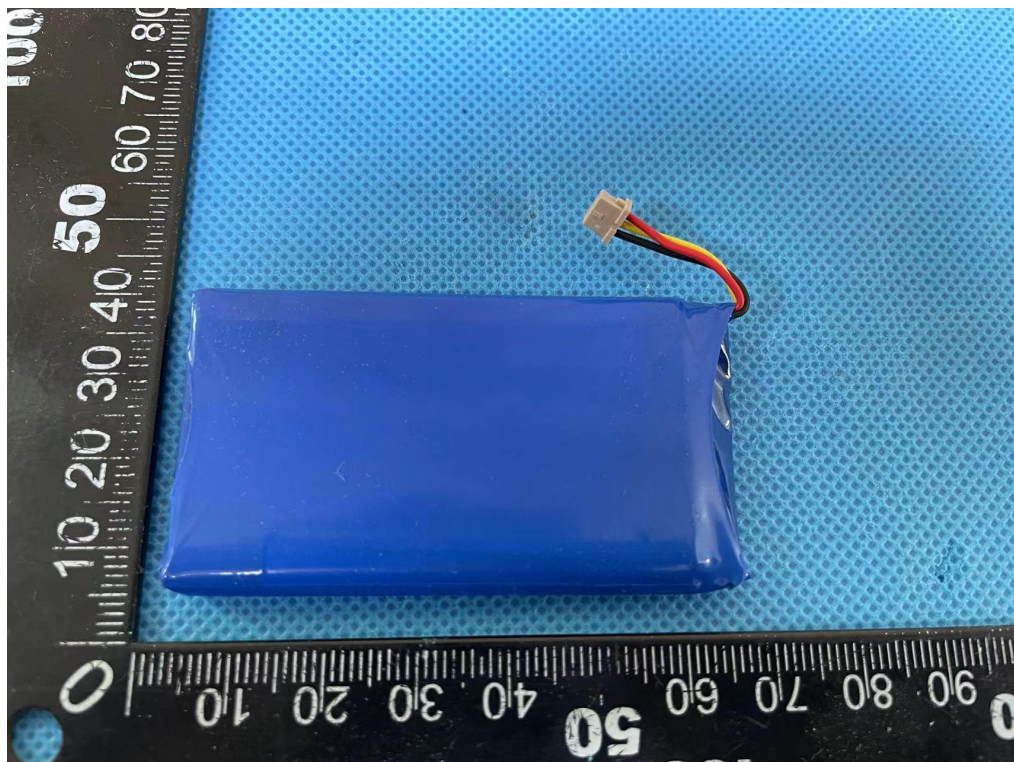
Circuit diagram



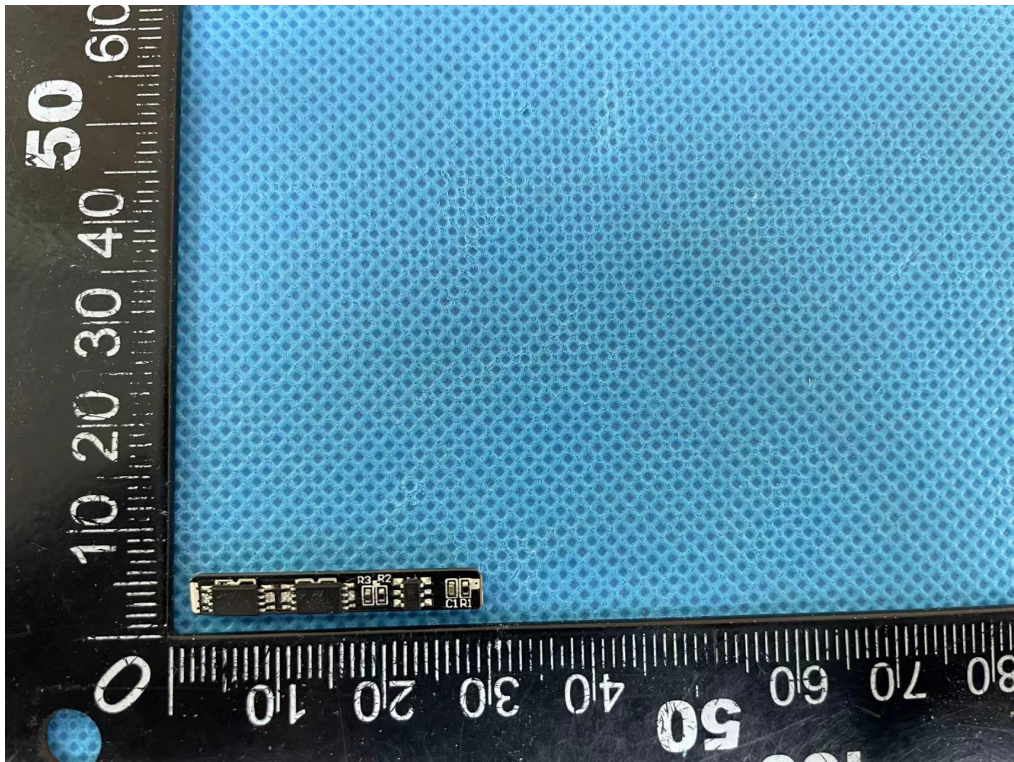
Circuit diagram



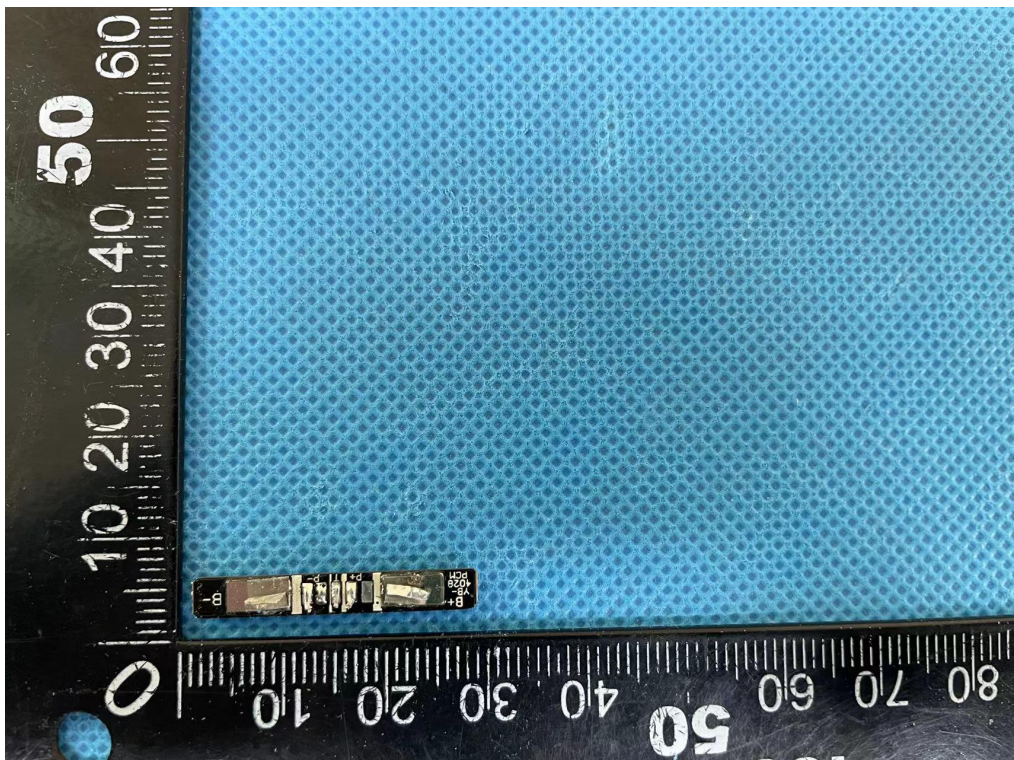
Front view of battery



Back view of battery



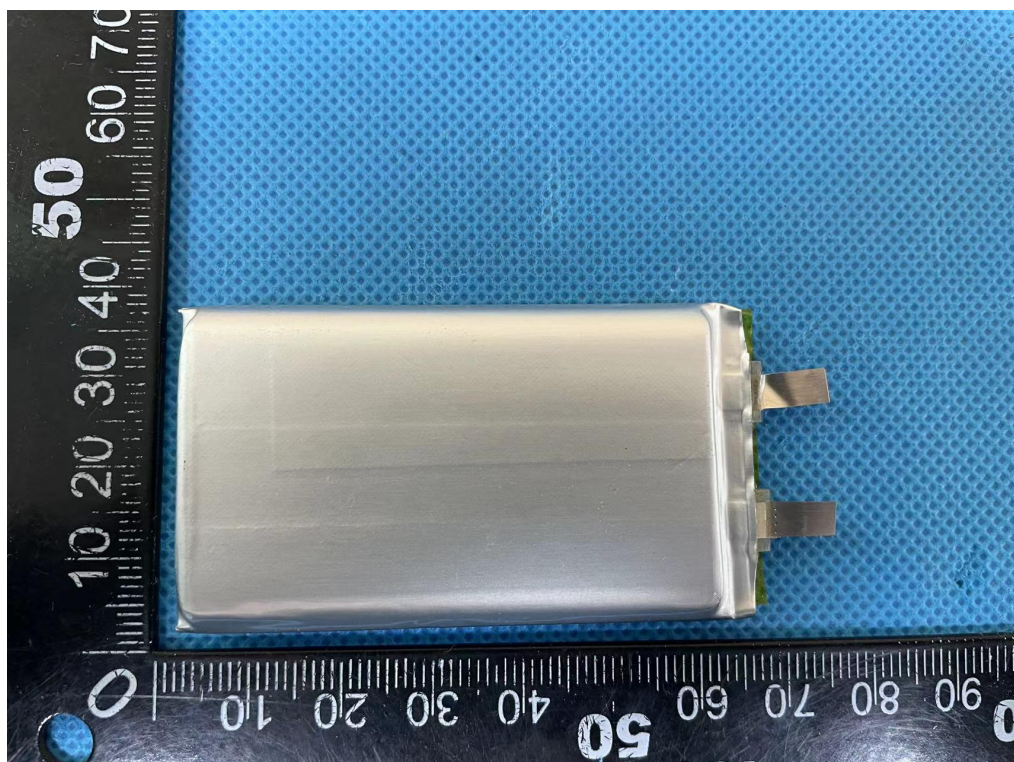
Front view of PCM



Back view of PCM



View of cell-1



View of cell-2